



## **SAS® Users Encounter the Same Issues:**

### **Diagramming and Documentation**

- Manual effort to diagram, document, and maintain SAS® programs

### **Error Checking**

- Analyse program, execution log, and flow diagrams to correct errors

### **Maintenance of Legacy Code**

- Length of time it takes to understand previously developed SAS® programs

### **Share existing SAS® Code**

- Search Internet or corporate Intranet sites to locate existing programs

## **ComplementSoft's™ Solution:**



### **Diagramming and Documentation**

- Automatically generates program and data flow diagrams from base SAS®

### **Error Checking**

- Scans the log files and highlights existing errors

### **Maintenance of Legacy Code**

- Quickly view and analyse previously developed SAS® programs

### **Share existing SAS® Code**

- Streamlines process to locate, use, and insert code from templates

For more information, contact:

Ratcliffe Technical Services Limited

Phone: +44 1322-525672

Email: [enquiries@ratcliffe.co.uk](mailto:enquiries@ratcliffe.co.uk)

## What is ASAP™?

ComplementSoft's ASAP™ is an alternative development platform and toolkit for SAS® users and programmers. The ASAP™ application is a productivity tool for transferring, editing, debugging and visualizing SAS® programs. Built-in program flow and data flow visualisation, remote execution, and source code template support round-out the features, making the ASAP™ application an essential tool in any SAS® environment.

## Compatibility

The current release of ASAP™ software runs on all 32-bit Microsoft Windows 95/98, 2000, NT and ME operating systems.

## Key features

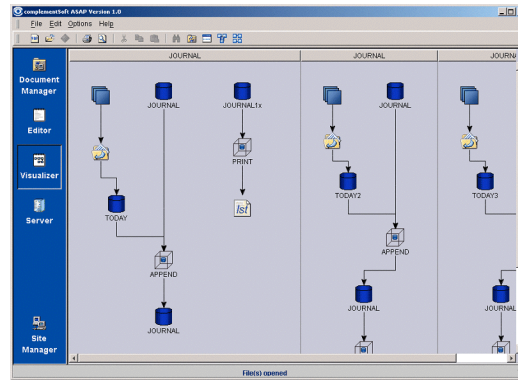
The application's key features include:

- Visualiser
- Document Manager
- Template Manager
- Editor
- Site Manager
- Server

These are only the major components that a user will find available with ASAP™. All the components have too many other built-in features to list them all here. Request the trial version today for free! Try it! You'll gain productivity in the first week of using ASAP™ . . .

Do you have a SAS® program that is run frequently, but no one has looked at the actual code for a while because the person that wrote the code is no longer with the company? . . . Or it's too big a program and it would cost too much in time and/or ££ to analyse it? Run it through ASAP™ to immediately, and visually, see bugs, duplicate sorts, redundant code, etc. Your company will save more in mainframe cycles or UNIX CPU utilisation than the cost of ASAP™!

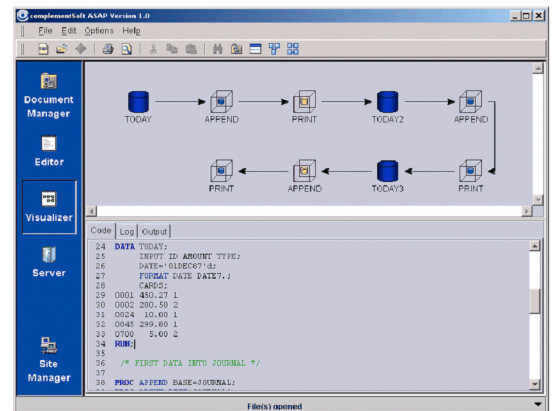
## Selected Product Features



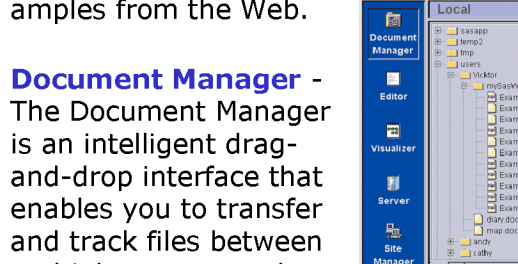
**Visualiser** - The Visualiser is an interactive, graphical display tool that shows program flow and data flow diagrams.

source code editor that provides language-aware syntax highlighting capabilities. This editor also highlights warnings and errors contextually within the log.

For added convenience and flexibility, the Visualiser and the Editor can be shown together in a split-screen mode.



**Template Manager** - The Template Manager is a source code template management tool that enables you to develop new programs and edit existing programs quickly and efficiently. An integral browser provides ready access to stored source code templates that you can insert into your program with a single click of your mouse. ASAP™'s Template Manager comes with a variety of generic SAS® language syntax templates. You can also save your own frequently-used code segments and pull examples from the Web.



**Document Manager** - The Document Manager is an intelligent drag-and-drop interface that enables you to transfer and track files between multiple servers and your local workstation.

The Document Manager is integrated into the other components that make up the ASAP™ environment and serves as the central point of access to the system.

